

Supplemental Data

A Morphologically Conserved Nonapoptotic Program Promotes Linker Cell Death in *Caenorhabditis elegans*

Mary C. Abraham, Yun Lu, and Shai Shaham

Figure S1. EM Images Showing that Nuclear Invagination and U.1/rp Cell Vacuoles Accompany Linker Cell Death

(A) A highly invaginated nuclear membrane (arrow) of a dying linker cell. (B) Different section through linker cell of same animal as in (A). Two vacuoles containing floccular material (asterisks) are shown within the U.1/rp cell. Arrow, U.1/rp nucleus. Such vacuoles may be engulfed linker cell components that have been degraded. Vacuoles flank a disintegrating linker cell (arrowhead) also engulfed by U.1/rp. IG, intestinal granule. Scale bar, 1 μ m. (C) Dying linker cell in a *him-4(e1267)* male. Black arrows, swollen ER. White arrow, swollen mitochondrion surrounded by a membranous layer.

Figure S1

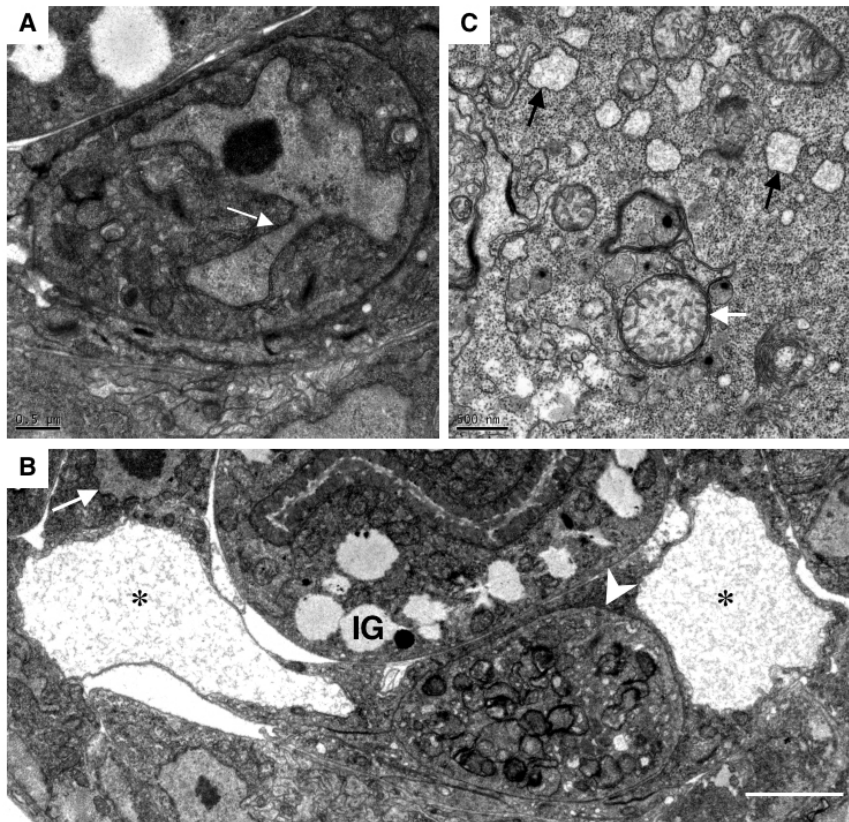


Figure S2. Linker Cell Death May Not Be Autophagic

(A) Table showing the number of LGG-1::GFP puncta at different stages of linker cell development. n, number of animals scored. (B) A migrating linker cell (outlined) expressing a transgene consisting of the *lgg-1* promoter driving expression of a LGG-1::GFP fusion protein. Top, DIC image. Bottom, fluorescence image. Autophagosomal puncta is marked with an arrowhead. (C) A linker cell (outlined) beginning to be engulfed by U.lrp (asterisk) in a late L4 stage animal expressing LGG1::GFP. Top, DIC image. Bottom, fluorescence image capturing most puncta (arrowhead) marking autophagosomes. Scale bar, 2 μ m. (D) Same as (B), except in a fully engulfed linker cell.

Figure S2

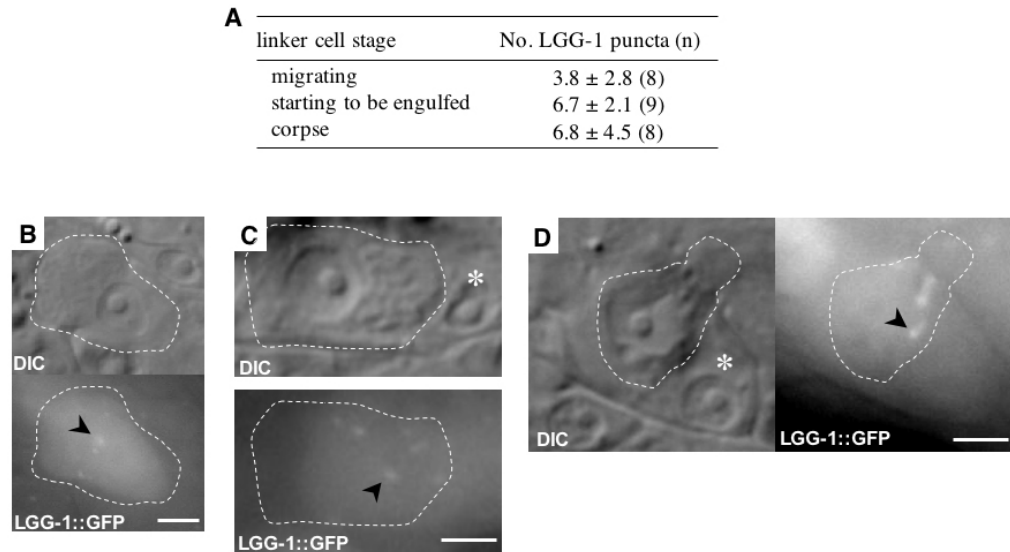


Figure S3. *lin-29* and *let-7* Mutant Male Gonads Accumulate Sperm

(A) A *lin-29(n333)* adult male. Note accumulation of sperm in the male gonad (arrowhead). Arrow, linker cell. Scale bar, 10 μ m. (B) Same as (A) except in a *let-7(n2853)* animal. Scale bar, 10 μ m.

Figure S3

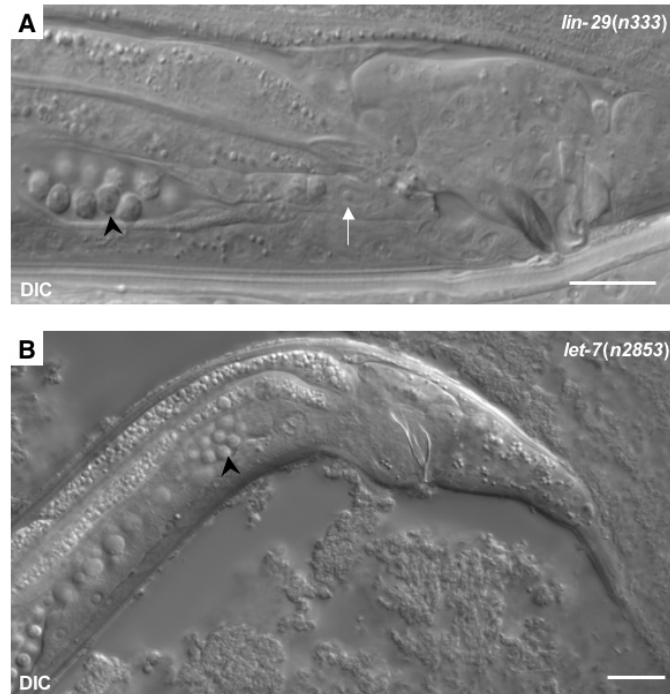


Figure S4. A Dying Linker Cell Can Be Engulfed by the Male Gonad

Image of a *him-4(e1267)* animals in which the linker cell migrated abnormally and was engulfed by the male gonad. Scale bar, 5 μ m.

Figure S4

